



# *The* **STEAM WHISTLE**



**Official Publication of The Vancouver TraiNgang©**

**[www.vancouvertraingang.com](http://www.vancouvertraingang.com)**

Vol. 2 No. 1

December 2006



## **Isn't the weather great?**

By Rob McKee  
Steam Whistle Editor

Winter has certainly arrived with a blast this year. While some people head for the tropics to warm up, many of us head to our train rooms to take advantage of the inclement weather and get some quality train time in. Once again model train enthusiasts in the lower mainland have celebrated the official opening of model train season with Trains 2006 on November 11 and 12. A great time was had by all and most of the members of the TraiNgang were there to run trains, attend events, and find that irresistible deal. Congratulations goes to Bruce Daykin for taking first place in the most popular vote contest for modules, and to Al McLennan for taking first place in the diorama category.

Our last outing of the year was at the Burnaby Village Museum on November 24 and 25. The museum staff allowed our club members to stay and run our trains for the day even though the park was closed to the public. Fun and excitement was had by all; especially when Tom Carr's module did a very realistic smoke show!

I wish you all a Merry Christmas and Happy New Year and I'll see you all at the AGM January 14<sup>th</sup>.

Rob

## **Coordinator's Corner**

By Bob Berbeck  
TraiNgang Coordinator

Well, 2006 was certainly a busy year. We did a total of 9 shows last year with a total of 24 Days of running. Let's see ..... that's a lot of running with several near misses. There were, of course, some spectacular crashes (done unintentionally I am sure).

To all the members who have been constant showing up for every show a big THANK YOU. There are some members who couldn't get out as much as they wanted, I am sure.

If anyone has any complaints as to the number of shows or the number of days please bring them up at the Annual General Meeting. I would rather we had smiles from our own people as well as the public.

As of January First all the new rules will be in effect so please re-read them and if necessary we can look at some of them at the Annual General Meeting.

My Wife and I would like to wish each and everyone a very Merry Christmas and a Happy New Year.

Take Care and Keep on Track

## CPR Holiday Train



On December 19, 2006 many members of the TraiNgang volunteered to help out the CPR Police with crowd control at the annual Holiday Train event.

The train pulled into Maple Ridge at 7:45 pm and was welcomed by a large crowd of people who came out to see the train and the entertainers. The train's artists included Canadian Blues rockers Wide Mouth Mason, Lisa Brokop, and Holiday Train orchestra conductor Mike Normand.

At 8:45 pm the train pulled out of Haney station beginning the final stage of its journey to Port Moody for the last show. Several TraiNgang members were also on hand at Port Moody to assist with crowd control.

Thanks to all of the TraiNgang members who donated their time to assist in this community event. Fun was had by all and the local food bank received many generous donations.

### 2007 Show Schedule

Our 2007 Show Schedule is as follows:

March 3<sup>rd</sup> to 4<sup>th</sup> 2007 Ridge Meadows Hospital

May 19<sup>th</sup> to 21<sup>st</sup> 2007 Heritage Village

Sept. 1<sup>st</sup> to 3<sup>rd</sup> 2007 Heritage Village

Sept. 9<sup>th</sup> 2007 Thornton Yards

Nov. 9<sup>th</sup> to 11<sup>th</sup> 2007 TRAINS 2007

Nov. 25<sup>th</sup> to 26<sup>th</sup> 2007 Heritage Village

**Confederation Park show dates will be confirmed at the AGM.**

**Please check our web site for periodic schedule updates and announcements.**

### Annual General Meeting

The AGM will be held at Confederation Park on January 14<sup>th</sup> at 1pm.

### Classifieds

The classified section is free to all TraiNgang members and can be used to either buy or sell.

Contact Rob McKee to place your ad in the next Steam Whistle.

### Marty says...

You can't get a shock touching the track!!



### Breaking News

**Our TraiNgang web site has now been updated to include the CPR Holiday Train.**

**Also on line are photos from the Heritage Village Show in November, complete with shots of the snowstorm.**

## Great Northern SIG

By Tom Carr

The first meeting of the Great Northern in British Columbia Special Interest Group was held at TRAINS 2006. A total of 19 people attended the meeting, including several visitors from Alberta, Vancouver Island and Washington State.

Judging from the interest and enthusiasm shown the SIG is off to good start. It was decided that communication will be by email and the Internet and that the main focus will be on sharing knowledge of the Great Northern Railway and its operations in British Columbia. While the SIG has the backing and support of the Great Northern Railway Historical Society membership in the GNRHS is not required and anyone interested in the GN is welcome to join. Contact Tom Carr at [tajcarr@mac.com](mailto:tajcarr@mac.com) for more information.



The next annual convention of the Great Northern Railway Historical Society will be held in Minot, North Dakota from July 15<sup>th</sup> to 18<sup>th</sup>, 2007. Details are available on the GNRHS web site.

### Best of the Web

Our "Best of the Web" feature site for December 2006 is the Great Northern Empire Historical site.

Whether or not you are a fan of the Great Northern Railway this site has system maps, photos of locomotives and rolling stock, and historical information any rail fan will enjoy.

Visit it at:

**[www.greatnorthernempire.net](http://www.greatnorthernempire.net)**

Photo to the right is the CPR Holiday Train arriving in Maple Ridge on Tuesday, December 19<sup>th</sup>, 2006.

Francina Carr photograph.

## TraiNgang Website

By Tom Carr

The month of November has been a very good one for our TraiNgang web site, not only did we pass the 8,000 visit milepost, but we also picked up four new awards. The Railroad Artists, Midnight Express, Water Tower and All Aboard Web Awards are now proudly displayed on our Awards page.

It's safe to say that our club has the best web site of any model railroad club or organization on the lower mainland, and we have the awards to prove it. All this would not be possible without the ongoing help and support of our members. That help and support has been fantastic this year; our September shows alone saw a combined total of over 1,000 photos submitted for the web site. The quality of the material submitted is so good that it is often really difficult to choose which images to use on the site. Our policy is to select some images from everyone who submits, so the more images you submit the better your chances of having several photos displayed on the web site.

Thanks to all our members who have helped make our web site what it is today; please keep up the great work. We also owe a special vote of thanks to Steve Carmichael, who provides the web site hosting service for our club.

Tom Carr  
Webmaster



## **Sedum Trees**

By Bob Berbeck

Sedum is a Plant which when dried can make some great trees.



**1** - This is the Plant in our garden



**2** - This is the plant in its dried state.  
It has been drying for a year



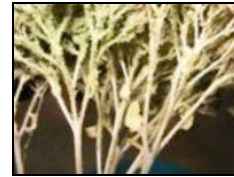
**3** -This is the type of Contact Cement spray that I used. There are many on the market so to each their own.



**4** - Spray the contact cement liberally on the plant head. Sprinkle the colour that you wish to make the tree. Gene's Tennessee module had some Sedum Trees done In Orange and Red.



**5** - Once the plant head is completely covered Let it dry overnight.



**6** - Coverage underneath may be important to you  
Just spray and sprinkle.



**7** - Break off the size of tree you wish to plant. This is easier done after everything is dried or you may end up with some sprinkles glued to you.



**8** - Drill a hole, place some white glue on the tree or in the hole. Place several as you require.



**9** - My Brother-in-Law uses Sedum Trees for his garden Railroad using the whole plant head. These have been done the same way but with a coat of clear lacquer on top to handle the rain. Racoons have a tendency to eat them if you plan on doing a Garden Railroad.